



**60x60**  
(23<sup>5/8</sup>"x23<sup>5/8</sup>" )



**30x60**  
(11<sup>13/16</sup>"x23<sup>5/8</sup>" )

**P**

Gres fine porcellanato ad impasto colorato  
Coloured-body fine porcelain stoneware  
Feinsteinzeug aus farbiger Masse  
Grès cérame fin à pâte colorée

## MARMI REALI \_\_\_\_\_

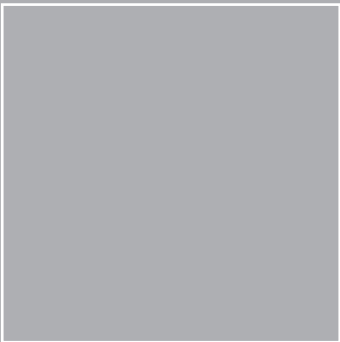
TECNOLOGIA DIGITALE  
DIGITAL TECHNOLOGY  
DIGITALTECHNOLOGIE  
TECNOLOGIE NUMÉRIQUE

VALENTINOby **PIEMME**

Alabastro lev/ret cm. 60x60



# MARMI REALI



**60x60**  
(23<sup>5/8</sup>" x 23<sup>5/8</sup>" )



**30x60**  
(11<sup>13/16</sup>" x 23<sup>5/8</sup>" )



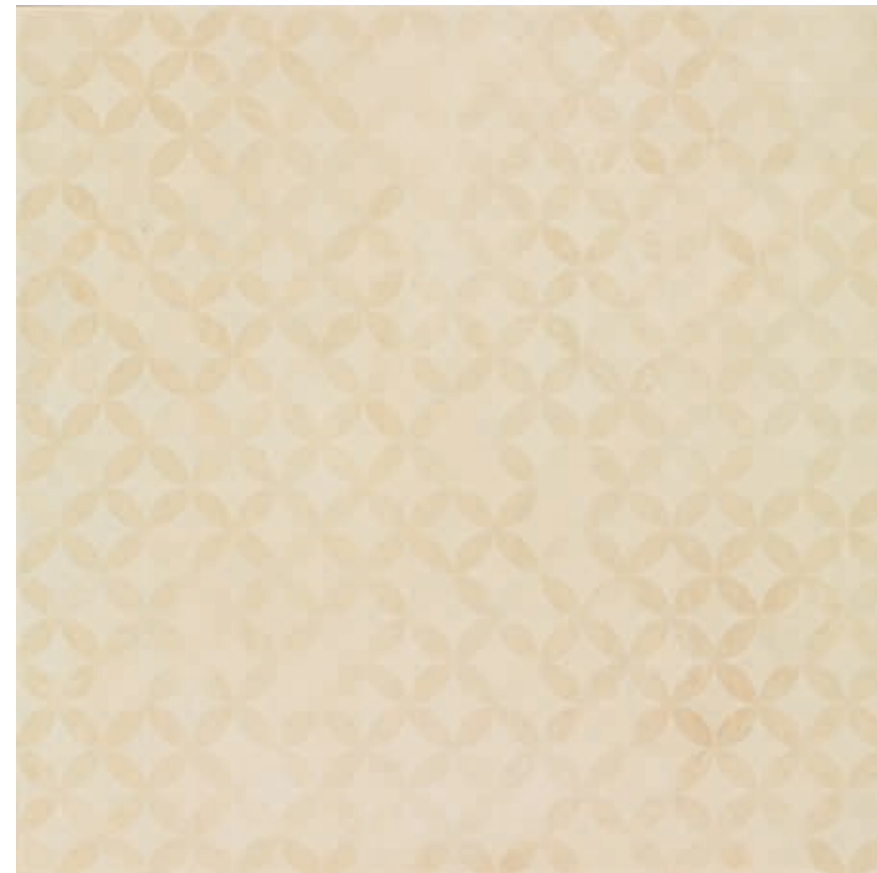
**9,5 mm**



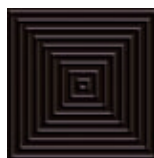
**GPV894** Alabastro lev/ret



**NGPV1025** Alabastro sat/ret  
cm. 60x60



**GPV903** Alabastro design lev/ret  
cm. 60x60



**GPV923** Tozzetto righe ret  
cm. 10x10  
pz. box: 4 **30**



**GPV909** Tozzetto alabastro lev/ret  
cm. 10x10  
pz. box: 4 **15**



**GPV914** Tozzetto alabastro firma lev/ret  
cm. 10x10  
pz. box: 4 **42**



**GPV920** Listello righe ret  
cm. 10x60 pz. box: 6 **85**



VALENTINO by PIEMME

TECNOLOGIA DIGITALE  
DIGITAL TECHNOLOGY  
DIGITAL TECHNOLOGIE  
TECHNOLOGIE NUMÉRIQUE



**NGPV1031** Alabastro lev/ret  
cm. 30x60



**GPPV944** Alabastro mosaico lev/ret  
cm. 30x30 (su rete)  
pz. box: 5



**GPV302** Triangolo firma  
cm. 5x5  
pz. box: 2



**GPV950** Alabastro linee lev/ret  
cm. 30x60 (su rete)  
pz. box: 5

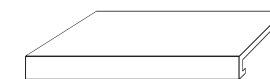


PEZZI SPECIALI - SPECIAL ITEMS -  
FORMSTÜCKE - PIÈCES SPÉCIALES



cm. 8x60 - 3<sup>1</sup>/<sub>8</sub>" x 23<sup>5</sup>/<sub>8</sub>"

**GPB370** Battiscopa alabastro lev/ret  
**GPB105** Battiscopa alabastro sat/ret



33x60 - 13<sup>0</sup>/<sub>10</sub>" x 23<sup>5</sup>/<sub>8</sub>"

**GPV937** Gradone alabastro lev/ret  
**GPV957** Gradone alabastro sat/ret



Per una migliore resa estetica Piemme consiglia una fuga di 2 mm e stuccature colorate in tinta con le piastrelle.  
For a better aesthetic finish, Piemme recommends the use of a 2 mm wide coloured joint that matches the tiles.  
Für ein optisch perfektes Ergebnis empfiehlt Piemme, die 2 mm breiten Fugen farblich auf die Fliesen abzustimmen.  
Pour parfaire l'effet esthétique obtenu, Piemme conseille de confectionner des joints de 2 mm et de la même couleur que les carreaux.



Alabastro lev/ret cm. 60x60



# MARMI REALI



**GPV901** Marfil lev/ret



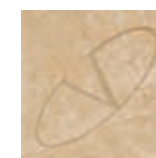
**NGPV1028** Marfil sat/ret  
cm. 60x60



**GPV906** Marfil design lev/ret  
cm. 60x60



**GPV912** Tozzetto marfil lev/ret  
cm. 10x10  
pz. box: 4 **15**



**GPV917** Tozzetto marfil firma lev/ret  
cm. 10x10  
pz. box: 4 **42**



**GPV923** Tozzetto righe ret  
cm. 10x10  
pz. box: 4 **30**



**GPV920** Listello righe ret  
cm. 10x60 pz. box: 6 **85**



**60x60**  
(23<sup>5/8</sup>" x 23<sup>5/8</sup>" )



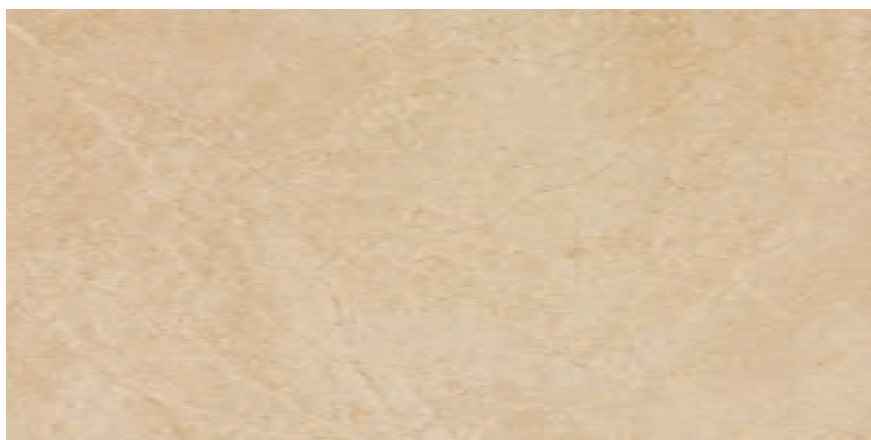
**30x60**  
(11<sup>13/16</sup>" x 23<sup>5/8</sup>" )



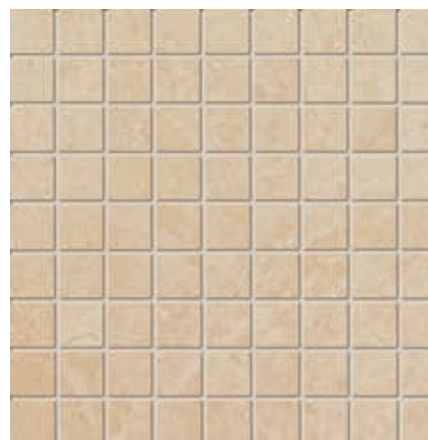
**9,5 mm**

VALENTINO by PIEMME

TECNOLOGIA DIGITALE  
DIGITAL TECHNOLOGY  
DIGITAL TECHNOLOGIE  
TECHNOLOGIE NUMÉRIQUE



**NGPV1034** Marfil lev/ret  
cm. 30x60



**GPV947** Marfil mosaico lev/ret  
cm. 30x30 (su rete)  
pz. box: 5



**GPV302** Triangolo firma  
cm. 5x5  
pz. box: 2



**GPV953** Marfil linee lev/ret  
cm. 30x60 (su rete)  
pz. box: 5

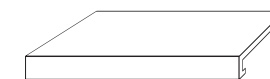


PEZZI SPECIALI - SPECIAL ITEMS -  
FORMSTÜCKE - PIÈCES SPÉCIALES



cm. 8x60 - 3<sup>1</sup>/<sub>8</sub>" x 23<sup>5</sup>/<sub>8</sub>"

**GPB373** Battiscopa marfil lev/ret  
**GPB108** Battiscopa marfil sat/ret



33x60 - 13<sup>0</sup>/<sub>10</sub>" x 23<sup>5</sup>/<sub>8</sub>"

**GPV940** Gradone marfil lev/ret  
**GPV960** Gradone marfil sat/ret



Per una migliore resa estetica Piemme consiglia una fuga di 2 mm e stuccature colorate in tinta con le piastrelle.  
For a better aesthetic finish, Piemme recommends the use of a 2 mm wide coloured joint that matches the tiles.  
Für ein optisch perfektes Ergebnis empfiehlt Piemme, die 2 mm breiten Fugen farblich auf die Fliesen abzustimmen.  
Pour parfaire l'effet esthétique obtenu, Piemme conseille de confectionner des joints de 2 mm et de la même couleur que les carreaux.

# MARMI REALI



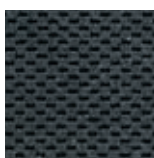
**GPV899** Bianco sorrento lev/ret



**NGPV1026** Bianco sorrento sat/ret  
cm. 60x60



**GPV904** Bianco sorrento design lev/ret  
cm. 60x60



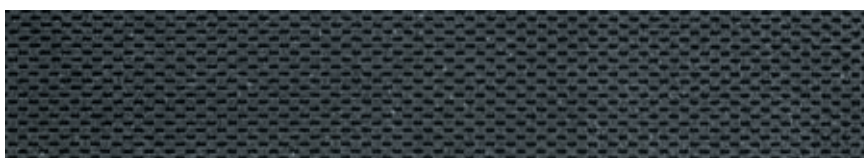
**GPV922** Tozzetto glitter ret  
cm. 10x10  
pz. box: 4 **33**



**GPV910** Tozzetto B. sorrento lev/ret  
cm. 10x10  
pz. box: 4 **15**



**GPV915** Tozzetto B. sorrento  
firma lev/ret  
cm. 10x10 **42**  
pz. box: 4



**GPV919** Listello glitter ret  
cm. 10x60 pz. box: 6 **100**



**60x60**  
(23<sup>5</sup>/<sub>8</sub>" x 23<sup>5</sup>/<sub>8</sub>" )

**30x60**  
(11<sup>13</sup>/<sub>16</sub>" x 23<sup>5</sup>/<sub>8</sub>" )



**9,5 mm**

VALENTINO by PIEMME

TECNOLOGIA DIGITALE  
DIGITAL TECHNOLOGY  
DIGITALTECHNOLOGIE  
TECHNOLOGIE NUMÉRIQUE



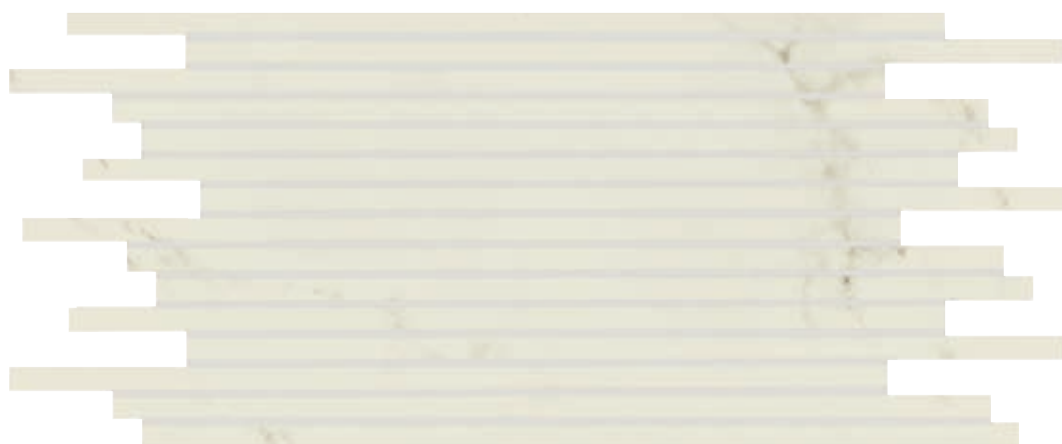
**NGPV1032** Bianco sorrento lev/ret  
cm. 30x60



**GPV945** Bianco sorrento  
mosaico lev/ret  
cm. 30x30 (su rete)  
pz. box: 5



**GPV302** Triangolo firma  
cm. 5x5  
pz. box: 2



**GPV951** Bianco sorrento linee lev/ret  
cm. 30x60 (su rete)  
pz. box: 5

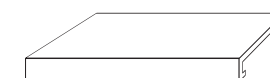


PEZZI SPECIALI - SPECIAL ITEMS -  
FORMSTÜCKE - PIÈCES SPÉCIALES



cm. 8x60 - 3<sup>1/8</sup>" x 23<sup>5/8</sup>"

**GPB371** Battiscopa b. sorrento lev/ret  
**GPB106** Battiscopa b. sorrento sat/ret



cm. 33x60 - 13<sup>0/10</sup>" x 23<sup>5/8</sup>"

**GPV938** Gradone b. sorrento lev/ret  
**GPV958** Gradone b. sorrento sat/ret



Per una migliore resa estetica Piemme consiglia una fuga di 2 mm e stuccature colorate in tinta con le piastrelle.  
For a better aesthetic finish, Piemme recommends the use of a 2 mm wide coloured joint that matches the tiles.  
Für ein optisch perfektes Ergebnis empfiehlt Piemme, die 2 mm breiten Fugen farblich auf die Fliesen abzustimmen.  
Pour parfaire l'effet esthétique obtenu, Piemme conseille de confectionner des joints de 2 mm et de la même couleur que les carreaux.



Bianco sorrento lev/ret cm. 60x60 - Listello glitter ret cm. 10x60  
Tozzetto b. sorrento lev/ret cm. 10x10 - Tozzetto b. sorrento firma lev/ret cm. 10x10



# MARMI REALI



**60x60**  
(23<sup>5</sup>/<sub>8</sub>" x 23<sup>5</sup>/<sub>8</sub>" )



**30x60**  
(11<sup>13</sup>/<sub>16</sub>" x 23<sup>5</sup>/<sub>8</sub>" )



**9,5 mm**

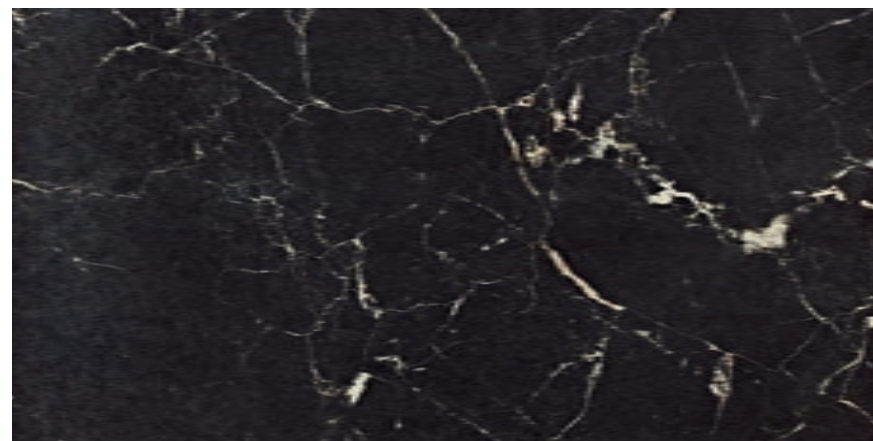


**NGPV1024** Nero reale lev/ret

P V3 IV 104

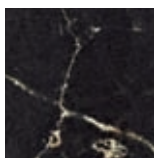
**NGPV1030** Nero reale sat/ret  
cm. 60x60

104

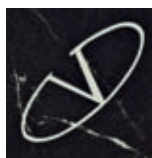


**NGPV1036** Nero reale lev/ret  
cm. 30x60

P V4 IV 104



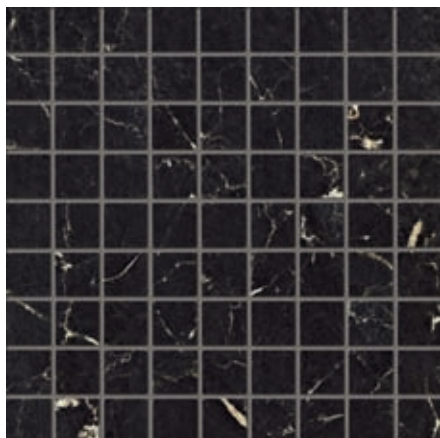
**GPV942** Tozzetto N. reale lev/ret  
cm. 10x10  
pz. box: 4 **15**



**GPV943** Tozzetto N. reale  
firma lev/ret  
cm. 10x10 **42**  
pz. box: 4

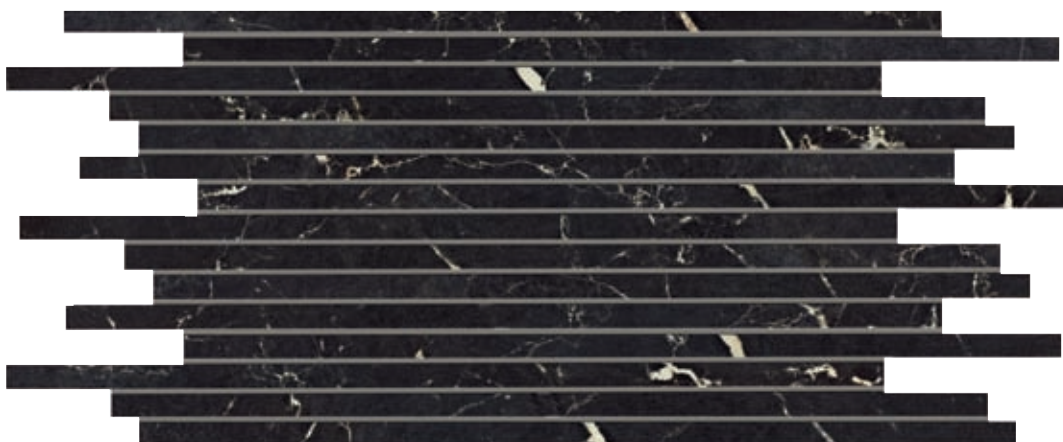
VALENTINO by PIEMME

TECNOLOGIA DIGITALE  
DIGITAL TECHNOLOGY  
DIGITALTECHNOLOGIE  
TECHNOLOGIE NUMÉRIQUE



**GPV949** Nero reale  
mosaico lev/ret  
cm. 30x30 (su rete)  
pz. box: 5

30



**GPV955** Nero reale linee lev/ret  
cm. 30x60 (su rete)  
pz. box: 5

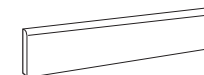
52



**GPV302** Triangolo firma  
cm. 5x5  
pz. box: 2

64

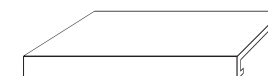
PEZZI SPECIALI - SPECIAL ITEMS -  
FORMSTÜCKE - PIÈCES SPÉCIALES



cm. 8x60 - 3<sup>1/8</sup>" x 23<sup>5/8</sup>"

**GPB104** Battiscopa nero reale lev/ret  
**GPB110** Battiscopa nero reale sat/ret

15



33x60 - 13<sup>0/10</sup>" x 23<sup>5/8</sup>"

**GPV956** Gradone nero reale lev/ret  
**GPV962** Gradone nero reale sat/ret

105

Per una migliore resa estetica Piemme consiglia una fuga di 2 mm e stuccature colorate in tinta con le piastrelle.  
For a better aesthetic finish, Piemme recommends the use of a 2 mm wide coloured joint that matches the tiles.  
Für ein optisch perfektes Ergebnis empfiehlt Piemme, die 2 mm breiten Fugen farblich auf die Fliesen abzustimmen.  
Pour parfaire l'effet esthétique obtenu, Piemme conseille de confectionner des joints de 2 mm et de la même couleur que les carreaux.

# MARMI REALI



**60x60**  
(23<sup>5/8</sup>" x 23<sup>5/8</sup>" )



**30x60**  
(11<sup>13/16</sup>" x 23<sup>5/8</sup>" )



**9,5 mm**



**GPV900** Perlino lev/ret

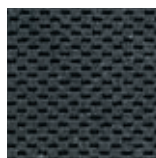
P V3 V 100  
100

**NGPV1027** Perlino sat/ret  
cm. 60x60



**GPV905** Perlino design lev/ret  
cm. 60x60

P V3 V 102



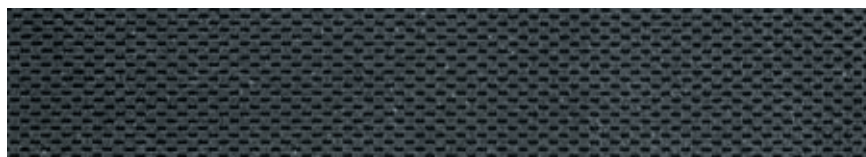
**GPV922** Tozzetto glitter ret  
cm. 10x10  
pz. box: 4 ▲33



**GPV911** Tozzetto perlino lev/ret  
cm. 10x10  
pz. box: 4 ▲15



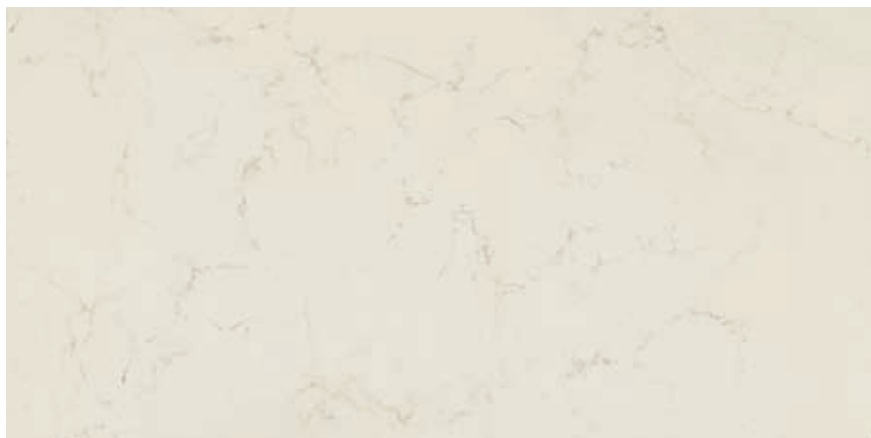
**GPV916** Tozzetto perlino firma lev/ret  
cm. 10x10  
pz. box: 4 ▲42



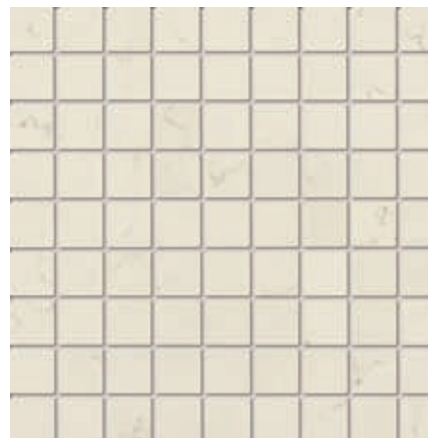
**GPV919** Listello glitter ret  
cm. 10x60 pz. box: 6 ▲100

VALENTINO by PIEMME

TECNOLOGIA DIGITALE  
DIGITAL TECHNOLOGY  
DIGITALTECHNOLOGIE  
TECHNOLOGIE NUMÉRIQUE



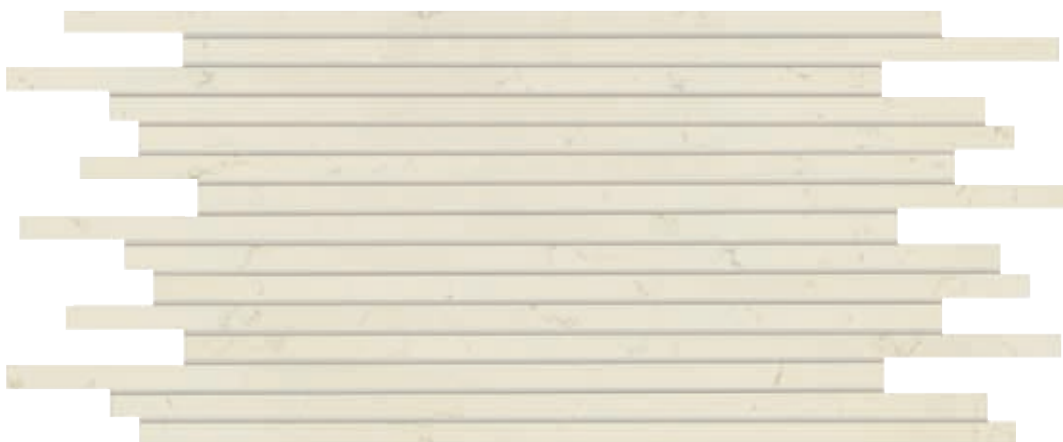
**NGPV1033** Perlino lev/ret  
cm. 30x60



**GPV946** Perlino mosaico lev/ret  
cm. 30x30 (su rete)  
pz. box: 5



**GPV302** Triangolo firma  
cm. 5x5  
pz. box: 2



**GPV952** Perlino linee lev/ret  
cm. 30x60 (su rete)  
pz. box: 5

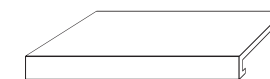


PEZZI SPECIALI - SPECIAL ITEMS -  
FORMSTÜCKE - PIÈCES SPÉCIALES



cm. 8x60 - 3<sup>1</sup>/<sub>8</sub>" x 23<sup>5</sup>/<sub>8</sub>"

**GPB372** Battiscopa perlino lev/ret  
**GPB107** Battiscopa perlino sat/ret



33x60 - 13<sup>0</sup>/<sub>10</sub>" x 23<sup>5</sup>/<sub>8</sub>"

**GPV939** Gradone perlino lev/ret  
**GPV959** Gradone perlino sat/ret



Per una migliore resa estetica Piemme consiglia una fuga di 2 mm e stuccature colorate in tinta con le piastrelle.  
For a better aesthetic finish, Piemme recommends the use of a 2 mm wide coloured joint that matches the tiles.  
Für ein optisch perfektes Ergebnis empfiehlt Piemme, die 2 mm breiten Fugen farblich auf die Fliesen abzustimmen.  
Pour parfaire l'effet esthétique obtenu, Piemme conseille de confectionner des joints de 2 mm et de la même couleur que les carreaux.



Perlino lev/ret cm. 60x60



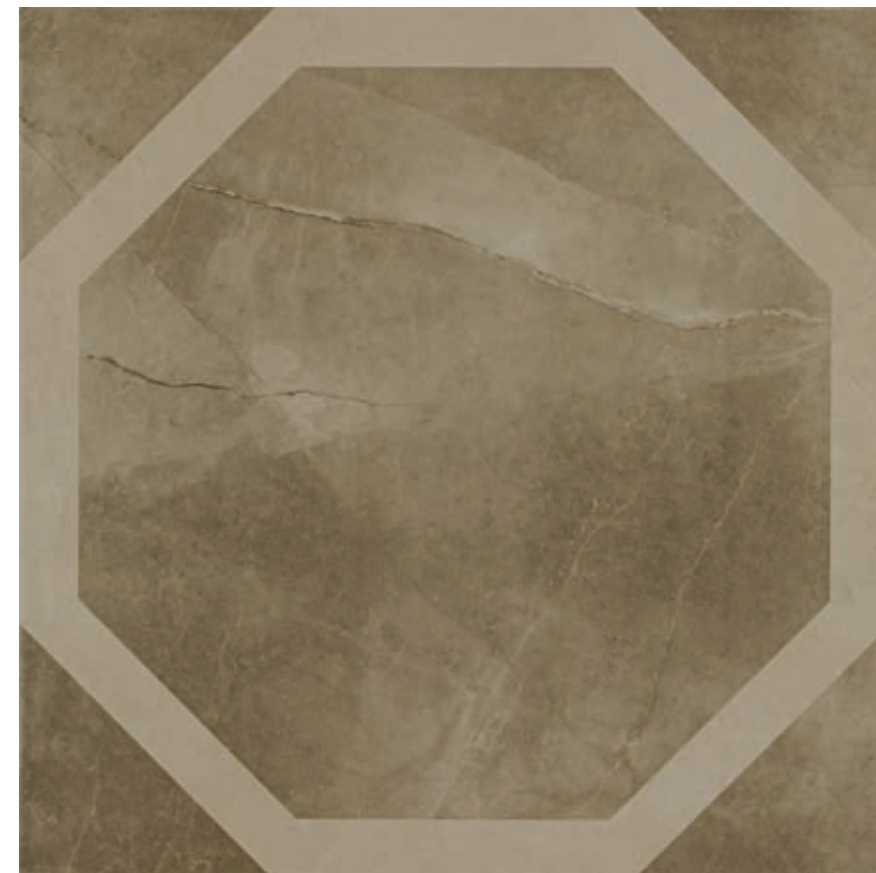
# MARMI REALI



**GPV902** Pulpis lev/ret

P V3 IV 100  
100

**NGPV1029** Pulpis sat/ret  
cm. 60x60



**GPV907** Pulpis design lev/ret  
cm. 60x60

P V3 IV 102



**GPV924** Tozzetto punti ret  
cm. 10x10  
pz. box: 4 **30**



**GPV913** Tozzetto pulpis lev/ret  
cm. 10x10  
pz. box: 4 **15**

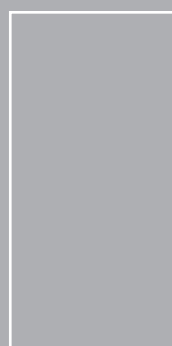


**GPV918** Tozzetto pulpis firma lev/ret  
cm. 10x10  
pz. box: 4 **42**



**GPV921** Listello punti ret  
cm. 10x60 pz. box: 6 **85**

**60x60**  
(23<sup>5</sup>/<sub>8</sub>" x 23<sup>5</sup>/<sub>8</sub>" )



**30x60**  
(11<sup>13</sup>/<sub>16</sub>" x 23<sup>5</sup>/<sub>8</sub>" )



**9,5 mm**

VALENTINO by PIEMME

TECNOLOGIA DIGITALE  
DIGITAL TECHNOLOGY  
DIGITAL TECHNOLOGIE  
TECHNOLOGIE NUMÉRIQUE



**NGPV1035** Pulpis lev/ret  
cm. 30x60

P V4 IV 101



**GPV948** Pulpis mosaico lev/ret  
cm. 30x30 (su rete)  
pz. box: 5

30



**GPV302** Triangolo firma  
cm. 5x5  
pz. box: 2

64



**GPV954** Pulpis linee lev/ret  
cm. 30x60 (su rete)  
pz. box: 5

52

PEZZI SPECIALI - SPECIAL ITEMS -  
FORMSTÜCKE - PIÈCES SPÉCIALES



cm. 8x60 - 3<sup>1</sup>/<sub>8</sub>" x 23<sup>5</sup>/<sub>8</sub>"

**GPB374** Battiscopa pulpis lev/ret  
**GPB109** Battiscopa pulpis sat/ret

15



33x60 - 13<sup>0</sup>/<sub>10</sub>" x 23<sup>5</sup>/<sub>8</sub>"

**GPV941** Gradone pulpis lev/ret  
**GPV961** Gradone pulpis sat/ret

105

Per una migliore resa estetica Piemme consiglia una fuga di 2 mm e stuccature colorate in tinta con le piastrelle.  
For a better aesthetic finish, Piemme recommends the use of a 2 mm wide coloured joint that matches the tiles.  
Für ein optisch perfektes Ergebnis empfiehlt Piemme, die 2 mm breiten Fugen farblich auf die Fliesen abzustimmen.  
Pour parfaire l'effet esthétique obtenu, Piemme conseille de confectionner des joints de 2 mm et de la même couleur que les carreaux.